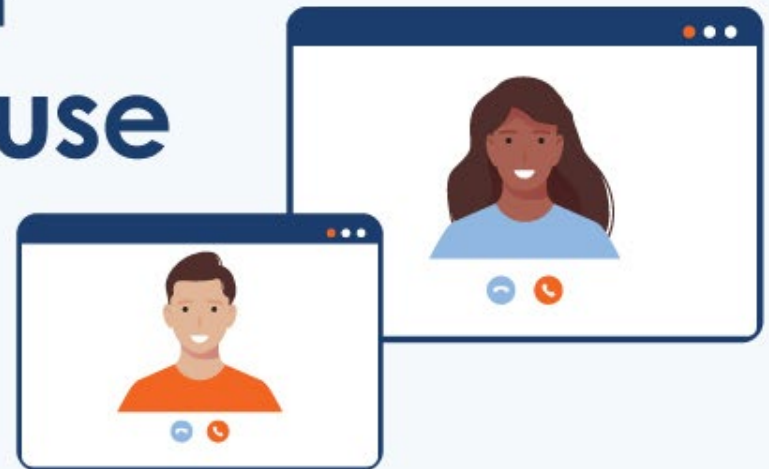


Welcome to our
***Virtual* Open House**



The information session will begin shortly.

Thanks for your patience.

Welcome to Our 2022_23 Virtual Open House





Meeting Norms

- We would love it if you would turn on your camera's.
- Please mute your microphones.
- We have two moderators ensuring that people are muted.
- If you would like to ask a question please raise your virtual hand or you can unmute during the Q&A session.
- If you have any questions after you can email laidlaw@pembinatrails.ca



Recognition of Treaty 1 Land

Greetings

from our Pembina Trails Board of Trustees

**These
elected
community
members take
great pride in
governing our
entire division.**



Kathleen McMillan



Dianne Zuk



Julie Fisher



David Johnson



Tim Johnson



Jaime Glenat



Gerry Melnyk



Cindy Nachtigall

Our Mission

“To provide a safe and caring community that enhances student growth and achievement, and prepares students for their roles as responsible citizens in a diverse and democratic society”





Laidlaw Lions

It Takes Courage to be Kind...



Circle of Courage



The wellbeing of every child is at the center of all we do!
Wellbeing = Achievement
Andy Hargreaves

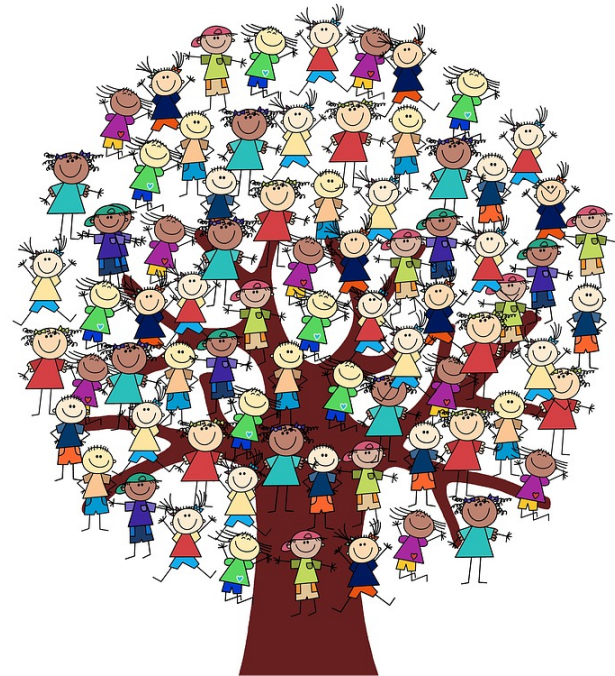
Students need to be able to see themselves as a student in school.

Pembina Trails Philosophy of Inclusive Practices



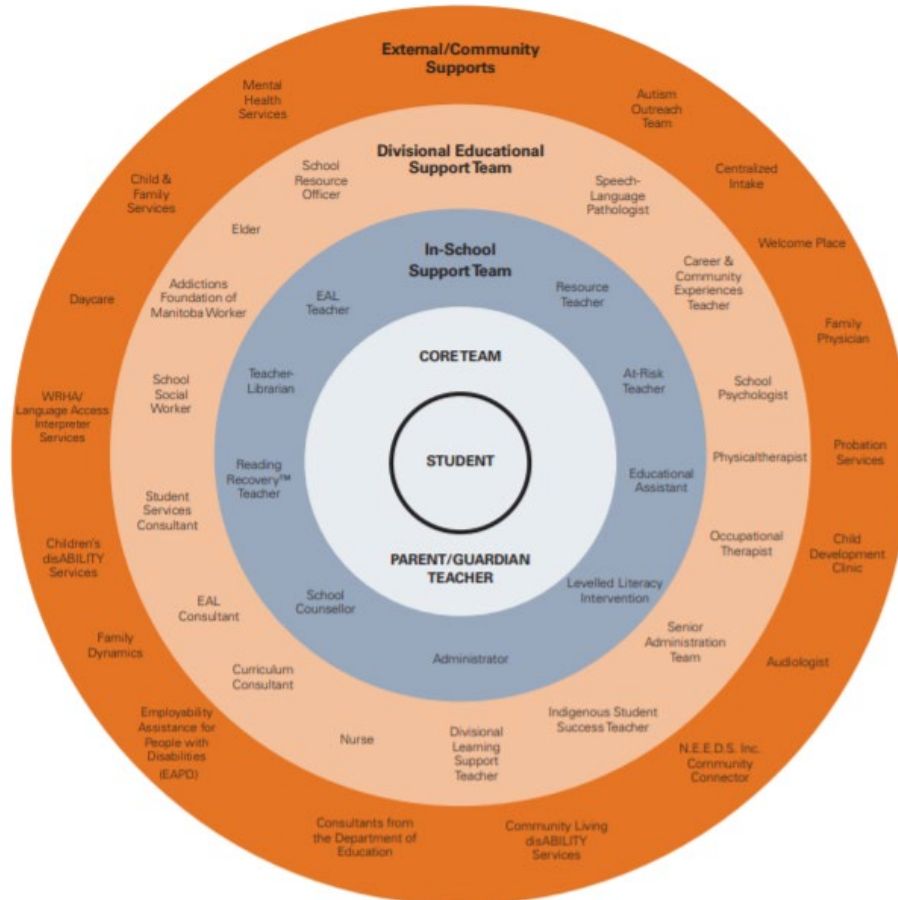
“Inclusion is a way of thinking and acting that allows every individual to feel accepted, valued and safe. An inclusive community consciously evolves to meet the changing needs of its members. Through recognition and support, an inclusive community provides meaningful involvement and equal access to the benefits of citizenship.

In Manitoba we embrace inclusion as a means of enhancing the well-being of every member of the community. By working together, we strengthen our capacity to provide the foundation for a richer future for all of us.”



Child Centred Teams

Circles of Support



Team planning and collaboration between home and school is a critical factor in student success – and we have multiple layers of supports in place to assist teachers with student learning. These supports are helpful when teachers are developing appropriate educational plans for individual students or groups of students.

Communication @ Laidlaw

School Calendar, Principal's weekly And monthly blogs.

- Key dates to remember for example: Strong Beginnings is on Thursday, September 22 and Friday, September 23, 2022...these days student attend by appointment only.

<https://www.pembina.ca/laidlaw/page/1538/calendar>

Administrator's Message



February's Blog
Monday, February 01, 2021
By: Jacqui Kroeker

Dear Laidlaw families,

Lots going in February, please read this month's blog carefully to kee...



Instagram

laidlawschoolwpg

Follow

292 posts

185 followers

19 following



Liked by maplesart and others

laidlawschoolart Here are a few more sculptures created by the 5/6 artists. In every sculpture, each colour...more
18 hours ago

laidlawschoolart

11:22 LAIDLAWWELLNESS Posts

laidlawwellness



Liked by laidlawschoolart and others
1 day ago

laidlawwellness

DID YOU THEY WANT US



Laidlaw School

@LaidlawSchool

Meet the Staff at Laidlaw



<https://www.pembinatrails.ca/schools/laidlaw/Contact-Us/Pages/Staff-Contact-Information.aspx>

<https://youtu.be/PiZLZ9Uwfns>

Quick Virtual Tour



<https://youtu.be/PYNZpanI1x0>



Community

- 175 families
- 240 students
- 34 staff members + 3 student teachers

Diversity is our strength, we learn as a community from each other and about each other!

Languages spoken in our Community:

Arabic, Cantonese, Chinese, Cree, English, Farsi, Filipino, French, Hebrew, Hindi, Korean, Kurdish, Mandarin, Persian, Portugese, Russian, Serbian, Spanish, Tagalog, Tamli, Urdu.





A Family Perspective

Ruth Cardoso De Abreu



PAC – PARENT ADVISORY COMMITTEE

Amy Vokey, Co-Chair

Laidlaw School Contact Information

Where are we?

515 Laidlaw Blvd. Winnipeg, Manitoba.
R3P 0L2

204.888.1678

<https://www.pembinatrails.ca/schools/laidlaw>

Enquiries

Please contact the Lunch Program Director (LDP) at:
laidlawlunchprogram@gmail.com

Pac Hot Lunches

<http://laidlaw.hotlunches.net/>

References

Laidlaw Families, please refer to the attached documents:

- Standard of Behaviour Form
- Lunch Program Absence Form
- Lunch Program Registration Form

Lunch Director and Lunch Supervisors please refer to the attached documents:

- Standard of Behaviour Form
- Lunch Program Absence Form
- Lunch Program Registration Form
- Job Description for LPD & Lunch Supervisors



www.pembinatrails.ca/laidlaw



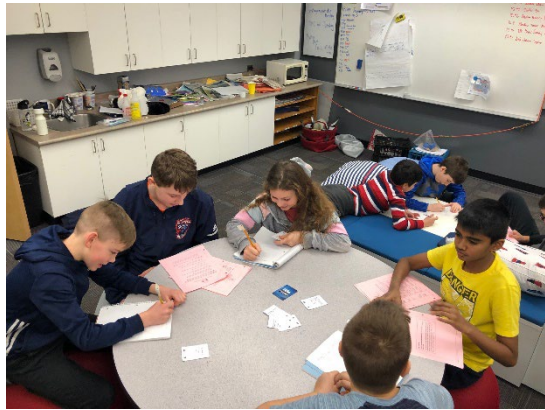
Laidlaw Lunch Program



*Accomplish
Anything*



Spirit of Belonging





Spirit of Generosity



Spirit of Mastery & Independence



- STEM School
- Elder Winston is Laidlaw's Elder and Indigenous Knowledge Keeper
- Experiential Learning
 - Hosted a Canadian Citizenship Ceremony
 - Regular school wide assemblies related to our Circle of Courage
 - Orange Shirt Day, Pink Shirt Day
 - Hosted a WE are Social Entrepreneurs Youth Leadership Conference
 - Student Exchange to Naujaat Nunavut, on the Arctic Circle

Elder Winston (Elder in Residence) Teaching Students the ABC Song in Cree





Multiage Classroom

- Allows for flexibility in the grouping of children according to need, ability, or interest; not just by age.
- Relationships with peers and teachers is one of the most instrumental influence in student success.
- A more natural learning situation is established. Children work at their own pace.
 - Continuum of literacy and numeracy
 - Projects/centers are designed that students at any level can be successful and learn at their own pace. Multi-age classrooms often “cycle” the graded curriculum for subjects such as Science and Social Studies.
- Benefits come to the older children from the quality of leadership and responsibility they develop.
- Young children are stimulated intellectually by older children.
- Children have a broader social experience with increased opportunities to lead and to follow, to collaborate and to make stable peer relationships.



Mastery, Independence & Rigor



- We support our children in activities no matter how well they perform or play we often say it is all about the commitment and participation. This is very true but in addition to this we promote excellence, rigor and hard work
- Reading & Numeracy: students are above Provincial scores
 - Summer reading bags
- An area for growth was in the area of problem solving overall
 - Professional learning communities focused on literacy, numeracy and assessment
 - Common planning times
 - Literacy, numeracy, STEM and Indigenous ways of knowing teacher leads
 - School wide STEM initiatives to promote problem solving, creative thinking and project based learning.



**We mean business
when it comes to
learning in a safe and
caring community!**

Student Support Services



Alyssa Allard* Penny Kasten* Gosha Tomczyk



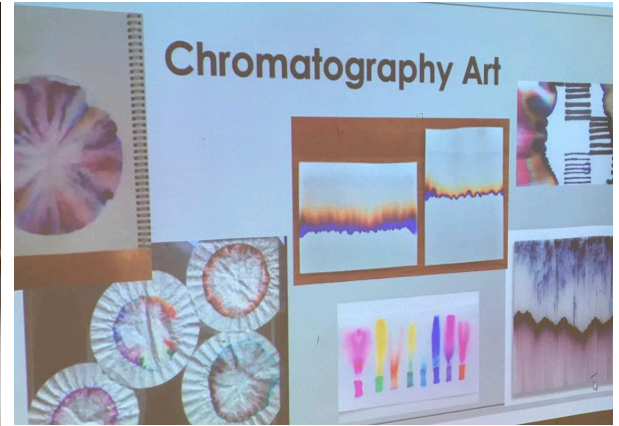
Library Learning Commons

Kim McGregor* Janine McNicholl



The Arts & PA

- All students in grade 5/6 receive both art and band programming.
- In grade 7 and 8 students decide between band and art. There is limited spaces, so this is on a first come basis.
- Students in grade 7 and 8 attend Charleswood School one afternoon per 6 day cycle for Practical Arts Programming. They cycle through woods, graphics and home economics programming.
 - They are bused by Pembina Trails.



Art Program – Ms. Tomczyk

<https://youtu.be/rftmF6h2XwA>





Band Program – Jesse Thomas



Physical Education

At Laidlaw school Physical Education is a priority and we believe that healthy active bodies lead to healthy active minds.

We strive to provide students with a variety of physical activities and movement experiences through balanced programming that focus on skill development and knowledge acquisition.

Our program focuses on 5 general learning outcomes including:

- Movement
- Fitness Management
- Social/Emotional Management
- Safety
- Health (Provided by classroom teachers)

Our goal is for students to gain experience, confidence and competence in their skills and encourage students to develop positive attitudes towards physical activity while learning strategies to lead healthy active lifestyles. For grade 5-8 students we provide a variety of sport clubs and extra-curricular opportunities at the school and divisional levels including:

- Cross Country
- Volleyball
- Basketball
- Badminton
- Track and Field

Inclusion is also an important part of PE at Laidlaw. In PE class we work to create a safe environment where all students feel welcome, where their needs are met and where everyone's abilities are respected.

Most importantly we have a lot of fun in PE class!

Be
Kind
To
Yourself



Student Stories...



<https://youtu.be/sQT9gdywsKg>



Class Placement

- Kindergarten – we have one class and students will receive a welcome package and more information at the Kindergarten Stay and Play on June 1st.
- Current students – we have a day in June when class placements are completed, where students meet their new teacher and peers if they are moving on from their multiage classroom.
- New students will be provided with a letter informing them of their new class and other relevant welcome information.



Registration is Online!

All registrations please submit prior to the end of February, for planning purposes.

Schools of Choice you can apply anytime after the open house, please apply before the end of February.

Schools of Choice will know by the end of April, sorry not before.

Registration Process

Please visit our website

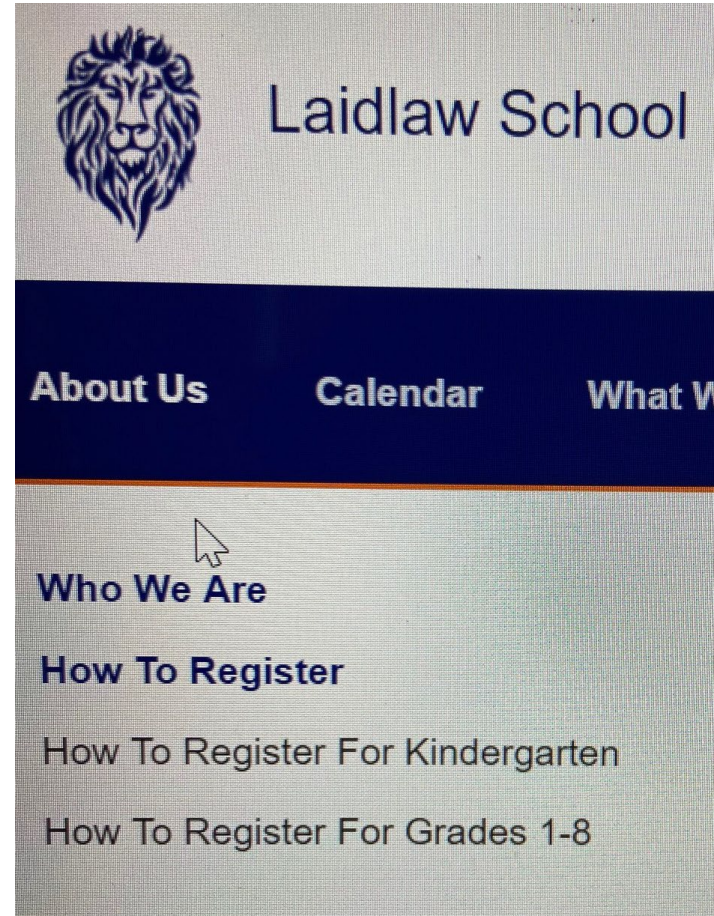
Are you registering for Kindergarten?

Are you registering for grades 1-8?

Please read the content carefully it tells you how to apply if you are in catchment, in division or out of division.

If you are in division or out of division, please also apply to your catchment school.

Once the fillable registration form, media release and technology agreement PDFs are completed – email it to laidlaw@pembinatrails.ca




Questions



Mastery & Independence with the R1 Program

Dwayne Gylywoyчук





RINK

THE HOME OF HOCKEY DEVELOPMENT

R1 LAIDLAW IN SEASON ACADEMY 2022-23'

At the R1 Laidlaw in-season academy, players are able to experience a unique opportunity being a student athlete. While working with the RINK Professionals, athletes will be exposed to on ice skill development, off ice training in Testify Performance, as well as a boardroom component. With this program, students will continue to play on their regular season teams while gaining extra development throughout the year. Players workload are monitored and managed by RINK Professionals to maintain optimal performance.



PROGRAM DATES

- September- June (10 month program)
- R1 Laidlaw follows the school schedule (no program on In-Service and Holidays)
- [For more information about Laidlaw School](#)

PRICING

- Inquire.
- Payment plans available
- Deposit required

A DAY IN THE LIFE OF A R1 LAIDLAW STUDENT ATHLETE

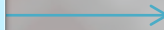
- 7:00AM | Arrive at RINK
- 7:20AM | On-Ice or Off-Ice
- 8:30AM | Boardroom or Off-Ice
- 9:25AM | Bus arrives at RINK to go to school
- 9:45AM First class begins
- * Players miss first period gym class to participate in the program. R1 Laidlaw fulfills their gym credit. *

PROGRAM DETAILS

- Monday- Friday mornings before school
 - All players attend Laidlaw School
 - 3 Ice times per week
 - 3 Workouts per week
 - 2 Boardroom Sessions per week
- ### **RATIO**
- 2009-10' BORN PLAYERS
 - 8 Male Players
 - 8 Female Players
 - 2-4 Goalies (Male/Female)

RINK Staff

Dwayne "Chewy"
Gylywoychuk
Dwayne@therink.ca
204-761-7615



Jordy Zacharias
Jordy@therink.ca
204-471-0516

