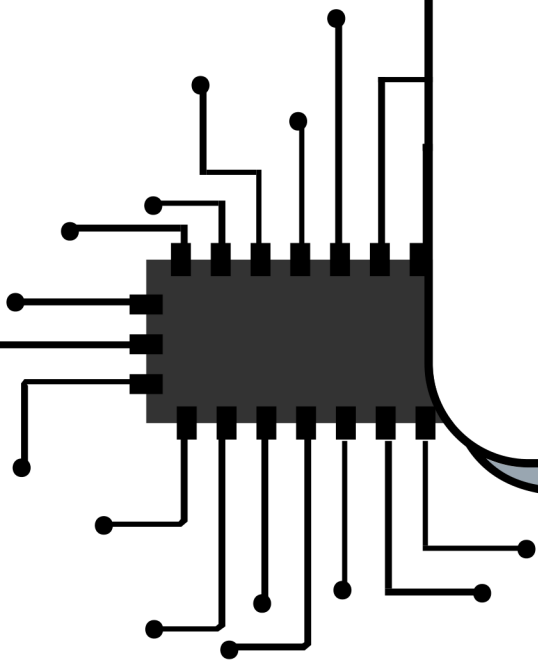
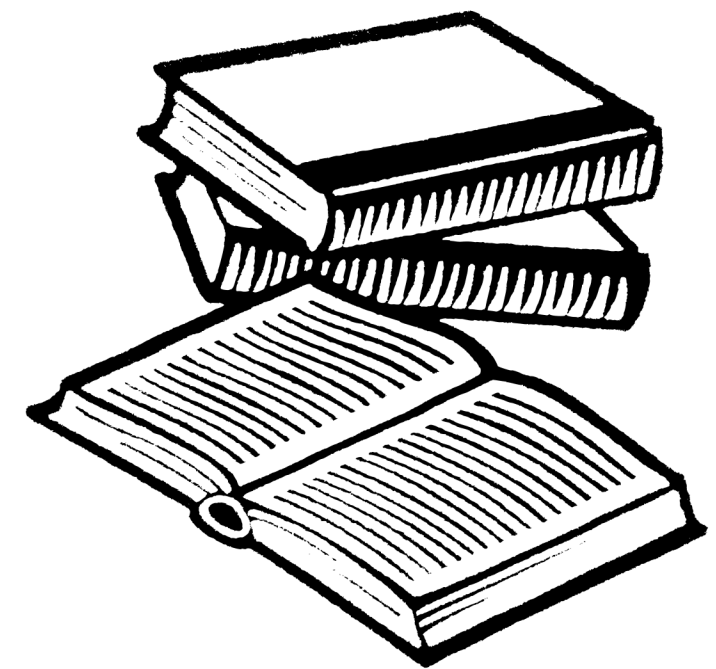




PEMBINA TRAILS EARLY COLLEGE

**WELCOME TO GRADE 10  
PTEC AT PTC!**






# TRADITIONAL TERRITORIES ACKNOWLEDGMENT STATEMENT

The University of Manitoba campuses are located on original lands of Anishinaabeg, Cree, Oji-Cree, Dakota, and Dene peoples, and on the homeland of the Métis Nation.

We respect the Treaties that were made on these territories, we acknowledge the harms and mistakes of the past, and we dedicate ourselves to move forward in partnership with Indigenous communities in a spirit of reconciliation and collaboration.





Welcome from  
the Admin Team

**JANE BACHART &  
JACQUI KROEKER**





*\*New Grade 10s\**  
**CONGRATULATIONS!**

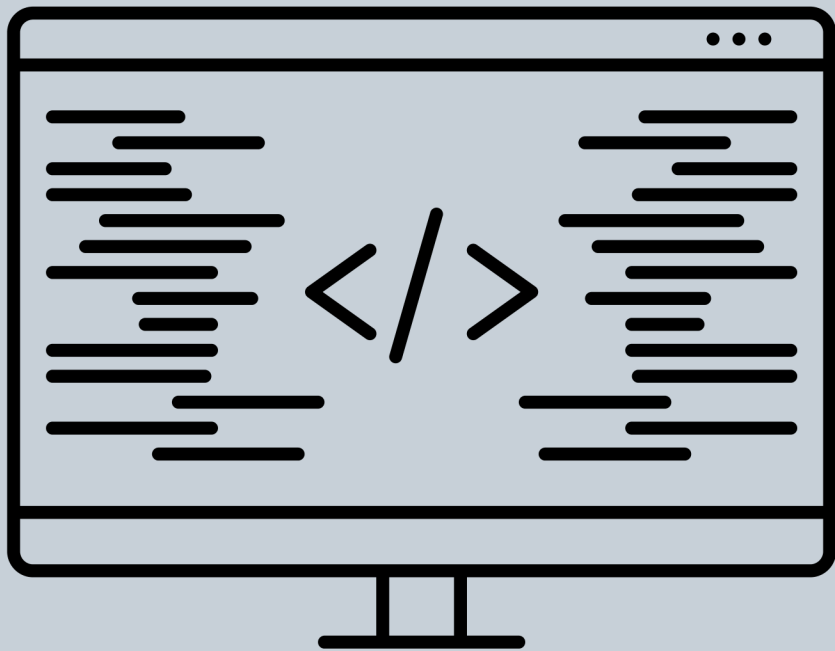
# PTEC

Our accelerated, highly technical program is committed to a current, industry-driven curriculum.

We believe in quality outcomes,  
high expectations and value hard work.

That is why we continue to be recognized by school divisions across Canada, industry members, government, professionals and the community for our exemplary work with students and our continued relationship with industry.

We won't waiver.



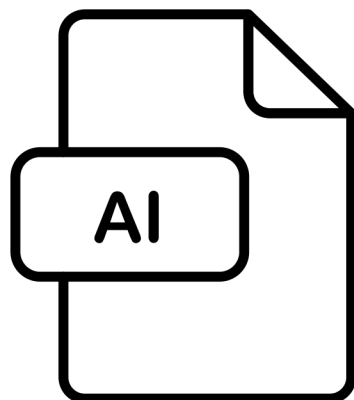


- Fusion of high school, college and industry
- Accelerated technology programming
- Intense emphasis on technology
- Standard and expectation of excellence
- Highly focused on the development of hard and human skills
- all programming and projects will revolve around social, environmental, and global issues and solutions and empathy in a technology-driven world.

# PTEC REMINDER

PTEC is a highly sought-after program which accelerates through an industry-driven curriculum so that students can graduate with not only a high school diploma but also post-secondary certification in one of two tech streams:

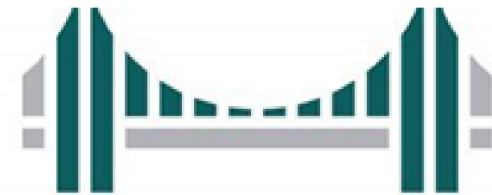
- FULL STACK DEVELOPER (FSD)
- CLOUD & NETWORK TECHNICIAN (CNT)





# WHO IS INVOLVED

PEMBINA TRAILS COLLEGIATE



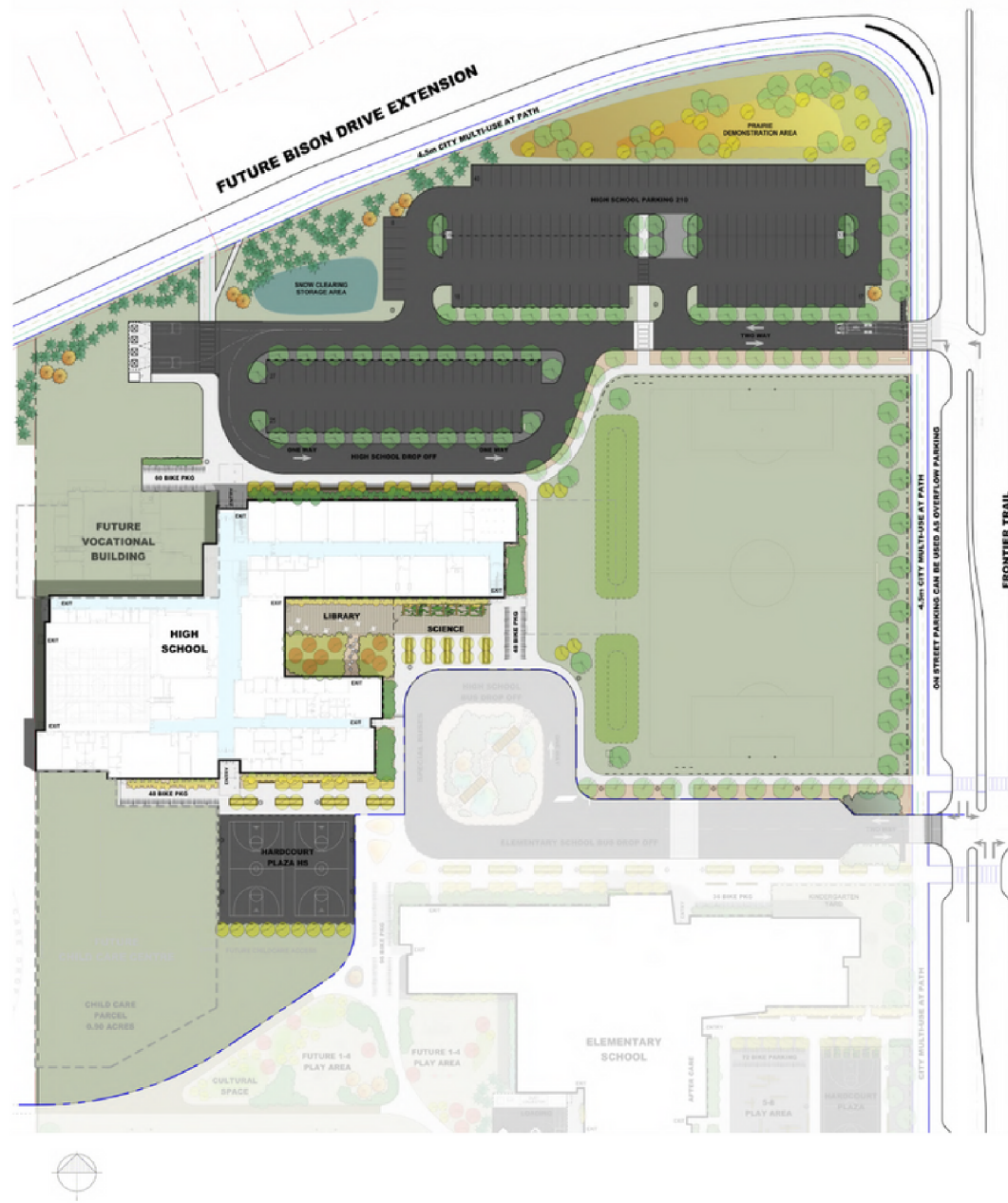
MANITOBA INSTITUTE OF  
TRADES AND TECHNOLOGY





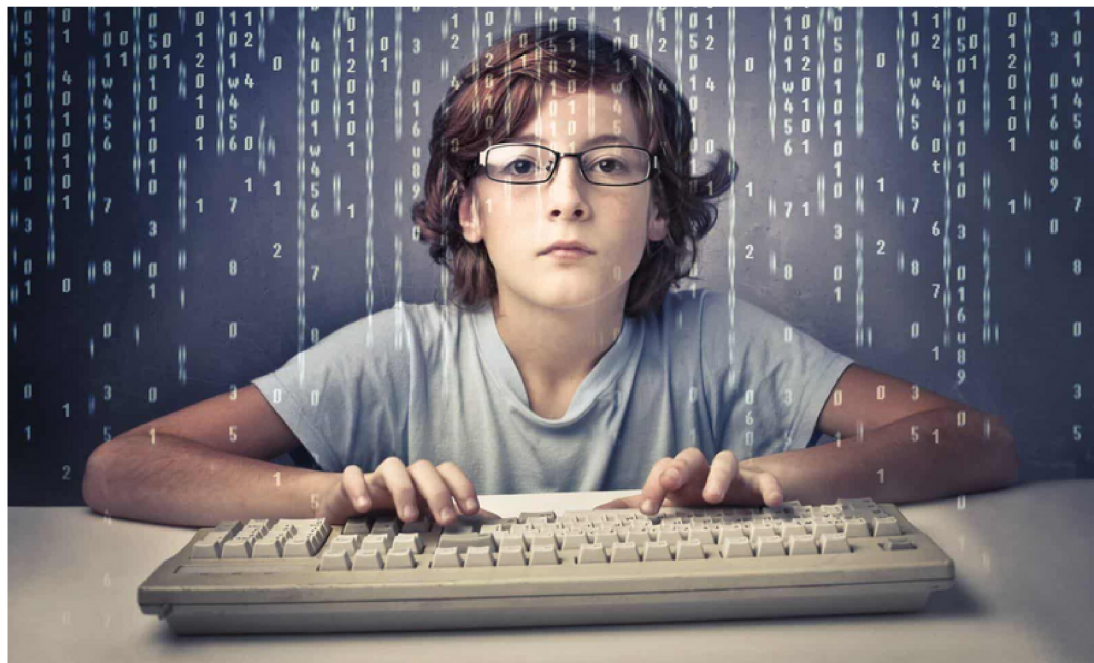
# PEMBINA TRAILS COLLEGIATE

50 Frontier Trail, Winnipeg, Manitoba





# WHAT DOES BEING A PTEC STUDENT MEAN



**MANITOBA INSTITUTE OF  
TRADES & TECHNOLOGY**





# Grade 10 Teachers

Scott Hardman  
Ashley Hoitnik

Students will be enrolled in the following:

- **Interdisciplinary:** Science, Geography, English
- Math & Phys. Ed.
- **PTEC Full Stack Developer (FSD):** Semester One
- **PTEC Cloud and Network Technician (CNT):** Semester Two



# Grade 10 Student Services

Lana Francis

## Connections:

- Guidance
- Mentorship
- Credit, Courses & Timetables
- MITT





## industry professionals

Looking to engage with the next generation of Manitoba's tech professionals? Tech Manitoba offers a variety of ways to share your talents and experiences with enthusiastic students looking to plan their career path.



### tech manitoba x pembina trails early college

Shape the future of Manitoba's tech industry. Tech Manitoba works closely with [Pembina Trails Early College \(PTEC\)](#) and [Manitoba Institute of Trades and Technology \(MITT\)](#), helping to facilitate industry-focused mentorship opportunities for this tech-centric accelerated high school, early college program.

PTEC combines the flexibility of high school, the rigor of post-secondary and the support and knowledge of the tech industry to create a comprehensive and authentic experience. **Students enrolled in the four-year PTEC program leave with a high school diploma; a post-secondary certificate and a head start in an exciting career.**

[Get Involved](#)

Marie Hacault - Youth Program Manager

# Schedule



## Grade 10s

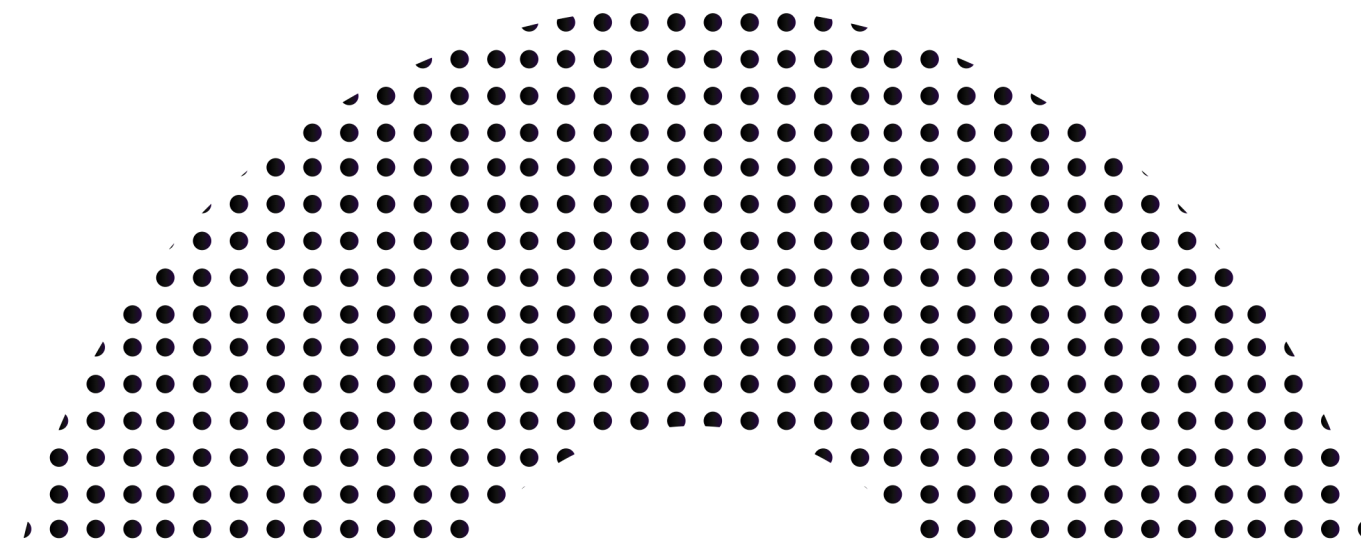
Attend PTC all day

## Grade 11s

Attend PTC in the AM

Attend MITT in the PM

	9	10	11	12
AM	PTC	PTC	PTC	MITT
PM	PTC	PTC	MITT	PTC





Timetables will be GIVEN OUT on

- Wednesday, June 21
- Thursday, June 22 at SmartPark with Lana Francis

Timetables CHANGES will be on

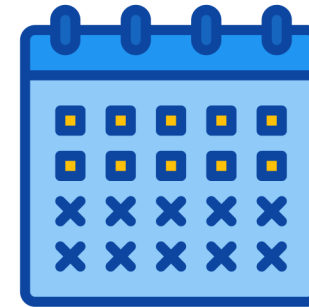
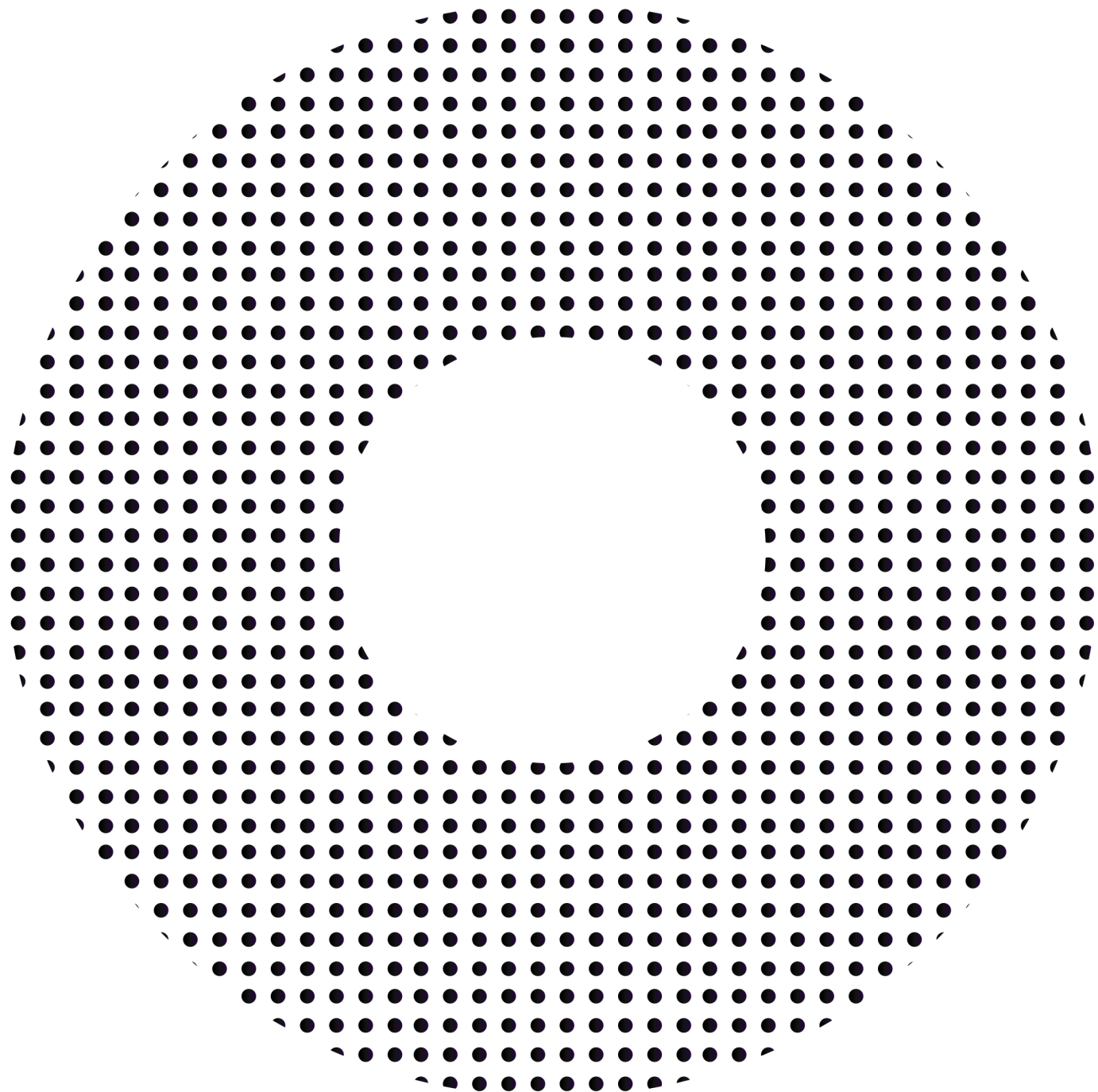
- Monday, June 26
- Wednesday, June 28 at SmartPark with Lana Francis

# TimeTables

Course requests are requests



# Attendance 100%



## No more than three absences

Sometimes students need to be away from school and we understand that.

Our data has shown that students who are away from PTEC for more than two days in a row suffer academically due to the hands-on activities and the accelerated pace.

## Family Vacations

Any type of vacation must be discussed with the school. Missing a significant amount of time learning in an accelerated environment does not support student success. There are limitations on how long a child can be away from school and continue at PTEC.



Sign in to  
Pembina Trails

## Edsby

All of our staff are continuously sharing with family members their assignments, tests, and project due dates. With the technology that we have, surprising marks or missing assignments no longer exist

# EXPECTATIONS & FAIR NOTICE

- Students in PTEC uphold a standard and have a reputation of excellence and professionalism which has taken years to establish. Behaviour that compromises this standard will be taken seriously and consequences will be administered.
- During each grade completion, there will be a meeting with teachers, admin, student services and the student to discuss the year's stretches and strengths. Any issues that might come up will be addressed.
- It is an expectation that students comply with our Technology Acceptable Use Policy.
- PTEC students need to abide by all of the expectations during their class time in PTEC and their other classes at PTC

# Transportation



- A student who attends PTEC at PTC and resides in the OP or SH area, has access to a divisional bus which will run from OP and SH to PTC in the AM and then the same route back to those areas after school
- Students outside of those areas should find their own transportation to and from school





All current devices (and peripherals) that students are using must be given back before they leave school on June 15, 2023.

Students will have access to devices at PTC, but will no longer have their own personal device. At times students will need to do homework or study outside of school and should have access to a personal device (outside of a smartphone).

Starting in grade 11, they will have to purchase their own device to take to MITT.

Students should have a Windows-based OS device at home so that they can work on their studies outside of school time.

# Technology

# Extra Curricular



Cyber Patriot

Scott Hardman



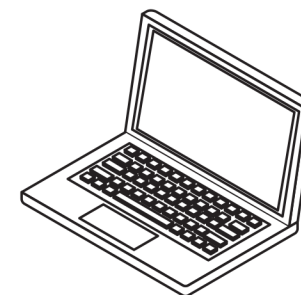
Games Club

Chess, Mario Cart



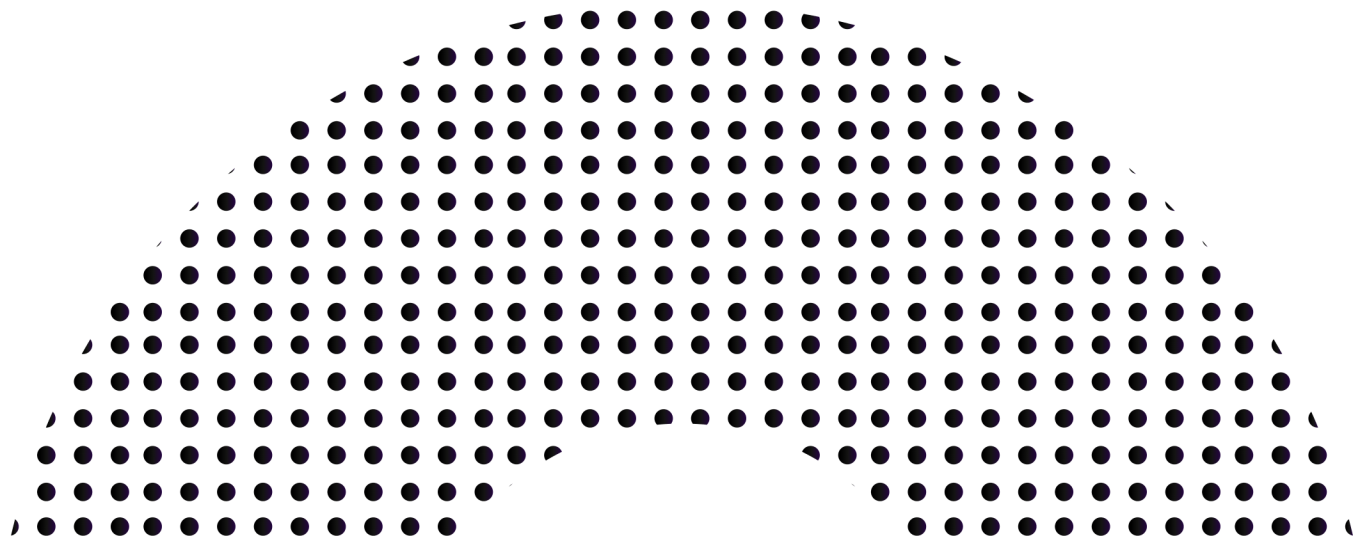
Dungeons & Dragons

Electronic or in-person



eSports

LoL and Rocket League



# Extra Curricular



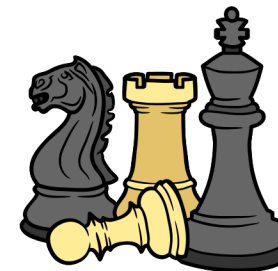
## SPORTS TEAMS

Team and individual sports



## COMMUNITY TEAMS

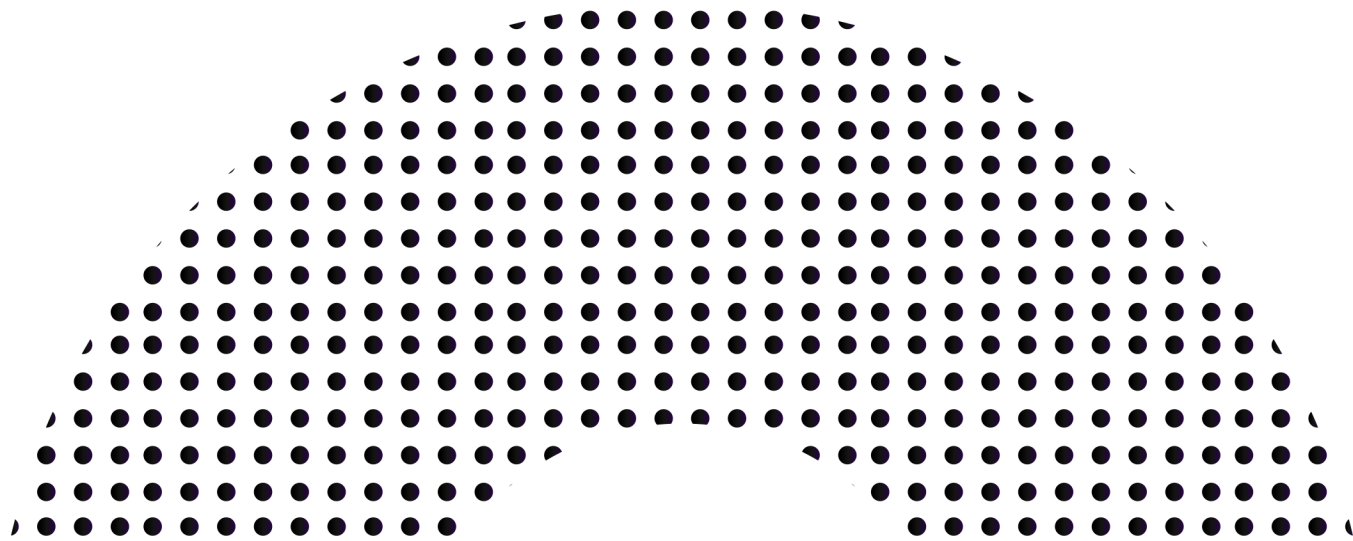
Youth in Philanthropy



## CLUBS

Chess, beading, GSA

Students that wish to come early or stay late must find alternative transportation to and from if divisional transportation doesn't work.





# Post-Secondary

## Grade 11

Students will attend Pembina Trails Collegiate in the morning and MITT in the afternoon for their first year of College in either (FSD) Full Stack Developer or (CNT) Cloud & Network Technician

## Grade 12

Students will attend MITT in the morning and Pembina Trails Collegiate in the afternoon. They will graduate with not only a high school diploma but also post-secondary certification in the stream of their choice



# Dear Families

I urge you to go home and discuss everything that was said here today and remember:

- Your child sits in that seat.
- Your child has to learn.
- Your child is rerouting their life.
- A commitment is essential for success.
- Someone's is waiting for the call.



4 year journey

# Questions?

- School starts at 8:30 am and ends at 3:30 pm
- We can not list the courses they will be taking yet. Ashley and Scott are preparing for the new space and continuing to meet with MITT
- Families should not plan for a vacation that would be longer than 3-4 days outside of the school programming. We will not approve that type of travel due to the nature of the programming.
- IT and Science fairs will be communicated through PTEC and PTC
- If you do not live within the PT divisional boundaries, you will not have access to divisional transportation

# Questions?

- Will there be bussing to/from PTC that are out of catchment?
- I want to know the plan for 10 and onwards and to know precisely what the years look like.
- MITT is involved or not.
- Is there any database course included in the curriculum?
- When will we get to view the new school?

## RELATIONAL DATABASE DESIGN

This course will focus on creating databases using SQL Server, relations between tables, and simple queries, which students will use in future projects. Students will also learn how to write complicated GET and POST functions inside an MVC project.

**Course Code:** SD-310

**Course Requirements:** None

**Hours:** 50

## ADVANCED DATABASE AND ORM CONCEPTS

Students will explore in-depth details of databases, stored procedures, entity framework code, and advanced LINQ queries. A major part of this course includes a simulated a day at work, where students are challenged to finish a task in a new language and environment (php and MySQL). Students will use their problem-solving skills to quickly search and find solutions to on their own.

**Course Code:** SD-330

**Course Requirements:** None

**Hours:** 100

# Questions?

- Bus transportation with the city?
- Is PTEC moving to the new school PTC for the year 2023-2024?
- When will there be a tour of the new PTC?

# Contact us before June 30, 2023

For inquiries and connecting

**Email Address**

**Phone Number**

ptec@pembinatrails.ca

(204) 560 1999





