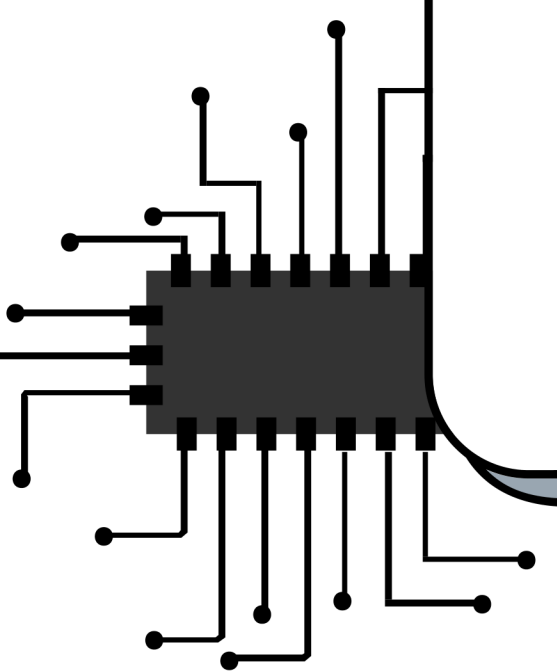
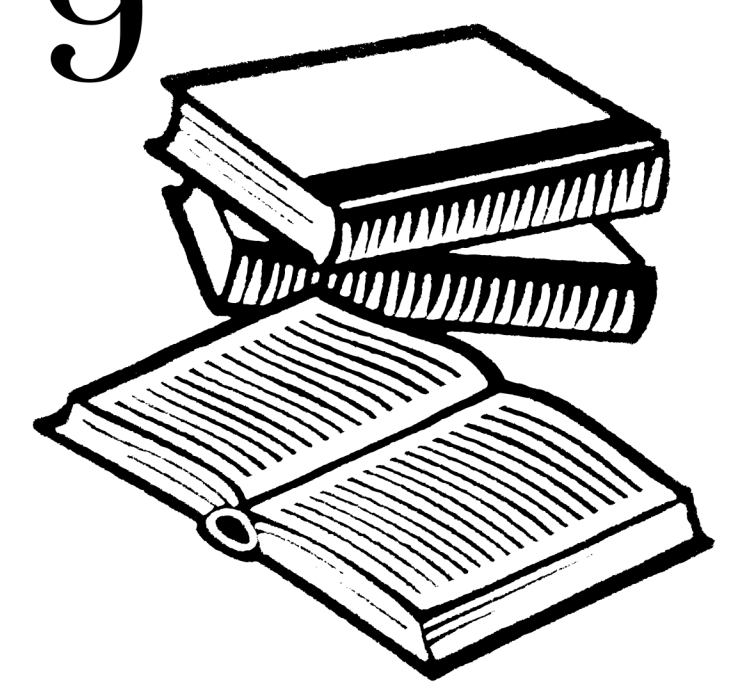


PEMBINA TRAILS EARLY COLLEGE

WELCOME TO GRADE 9 PTEC AT PTC!






TRADITIONAL TERRITORIES ACKNOWLEDGMENT STATEMENT

The University of Manitoba campuses are located on original lands of Anishinaabeg, Cree, Oji-Cree, Dakota, and Dene peoples, and on the homeland of the Métis Nation.

We respect the Treaties that were made on these territories, we acknowledge the harms and mistakes of the past, and we dedicate ourselves to move forward in partnership with Indigenous communities in a spirit of reconciliation and collaboration.



Welcome from
the Admin Team

**JANE BACHART &
JACQUI KROEKER**





New Grade 9s
CONGRATULATIONS!

out of over 80 students, you were chosen

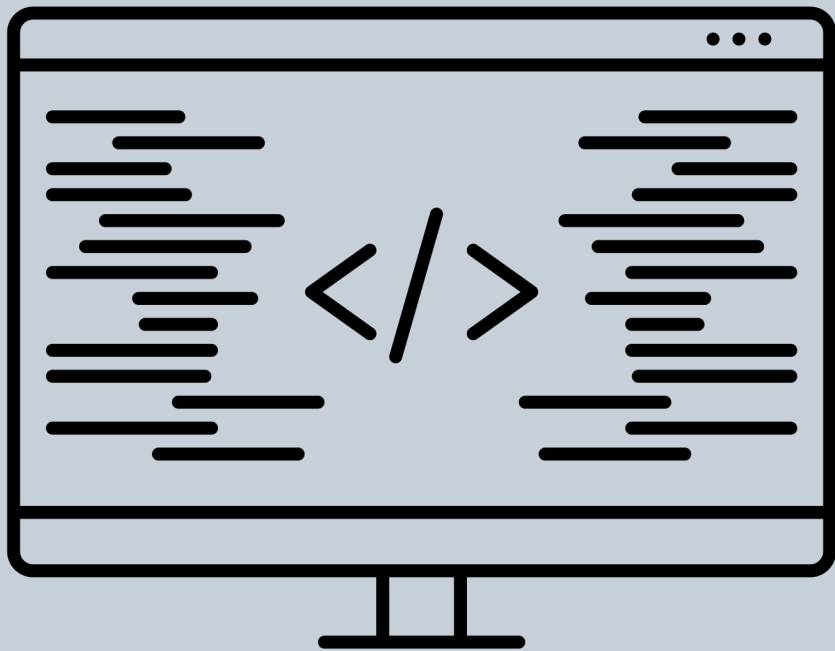
PTEC

Our accelerated, highly technical program is committed to a current, industry-driven curriculum.

We believe in quality outcomes, high expectations and value hard work.

That is why we continue to be recognized by school divisions across Canada, industry members, government, professionals and the community for our exemplary work with students and our continued relationship with industry.

We won't waiver.



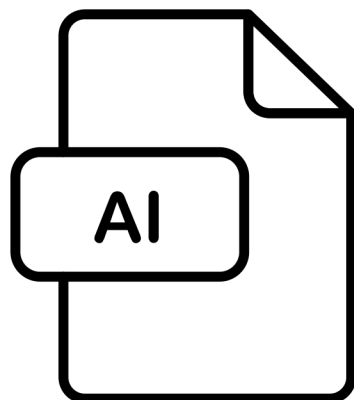


- Fusion of high school, college and industry
- Accelerated technology programming
- Intense emphasis on technology
- Standard and expectation of excellence
- Highly focused on the development of hard and human skills
- all programming and projects will revolve around social, environmental, and global issues and solutions and empathy in a technology-driven world.

PTEC REMINDER

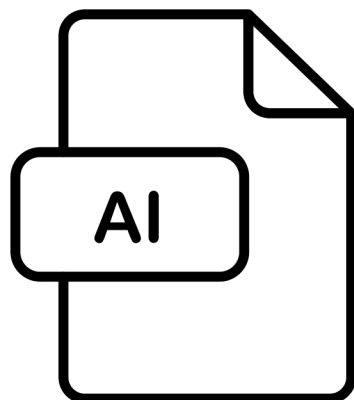
PTEC is a highly sought-after program which accelerates through an industry-driven curriculum so that students can graduate with not only a high school diploma but also post-secondary certification in one of two tech streams:

- FULL STACK DEVELOPER (FSD)
- CLOUD & NETWORK TECHNICIAN (CNT)





- 2017 - 18 - The idea
- 2018 - 19 - The first class completely at SH
- 2019 - 20 - Moved into SmartPark with four HHS & FI
- 2020 - 21 - First grade 12s - all grades
- 2021 - 22 - First graduating class
- 2022 - 23 - Moving out of SmartPark and into PTC
- 2023 - 24 - Grade 9, 10, & 11s at PTC
- 2024 - 25 - First graduating class of PTC and PTEC





WHO IS INVOLVED

PEMBINA TRAILS COLLEGIATE

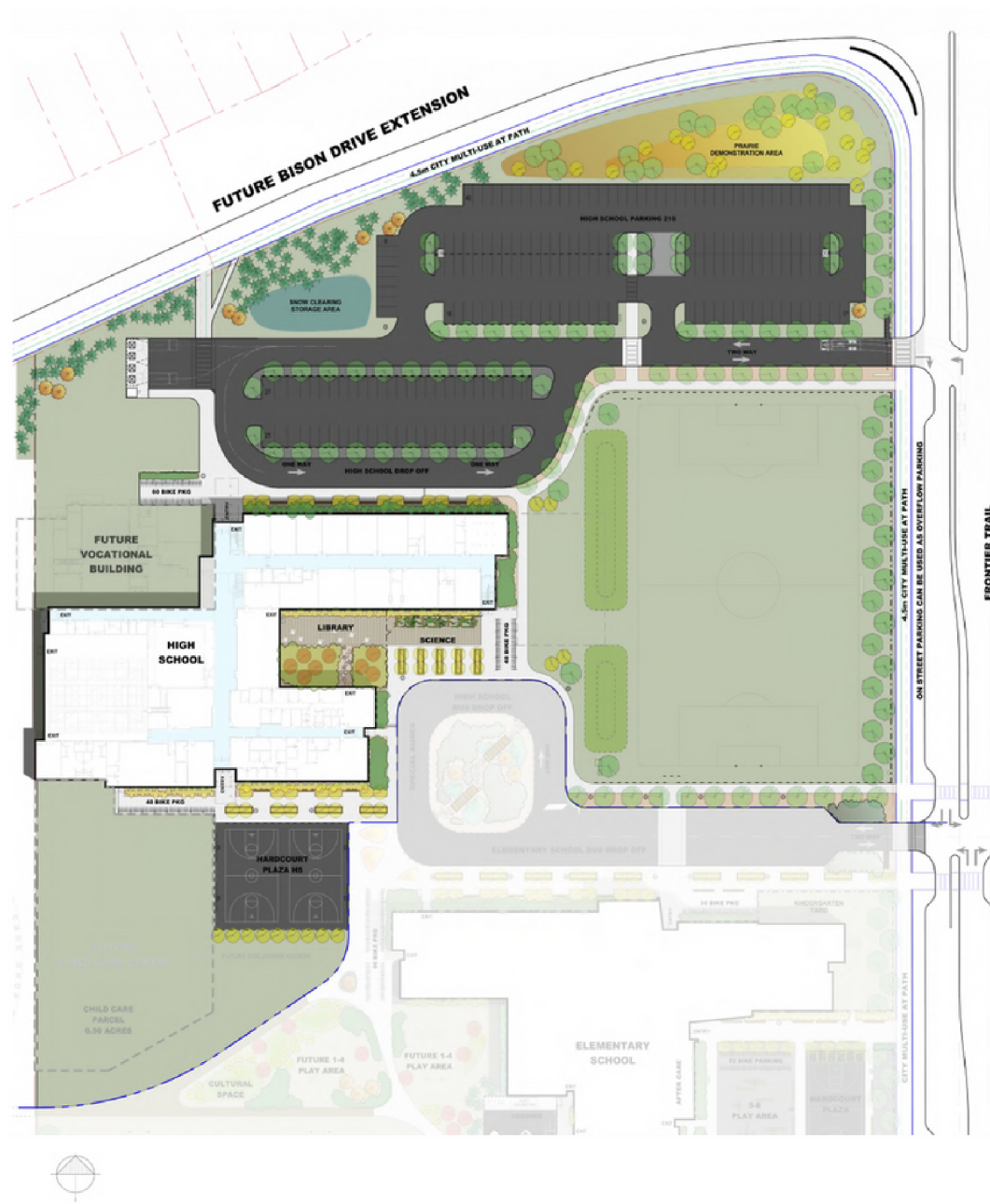


MANITOBA INSTITUTE OF
TRADES AND TECHNOLOGY

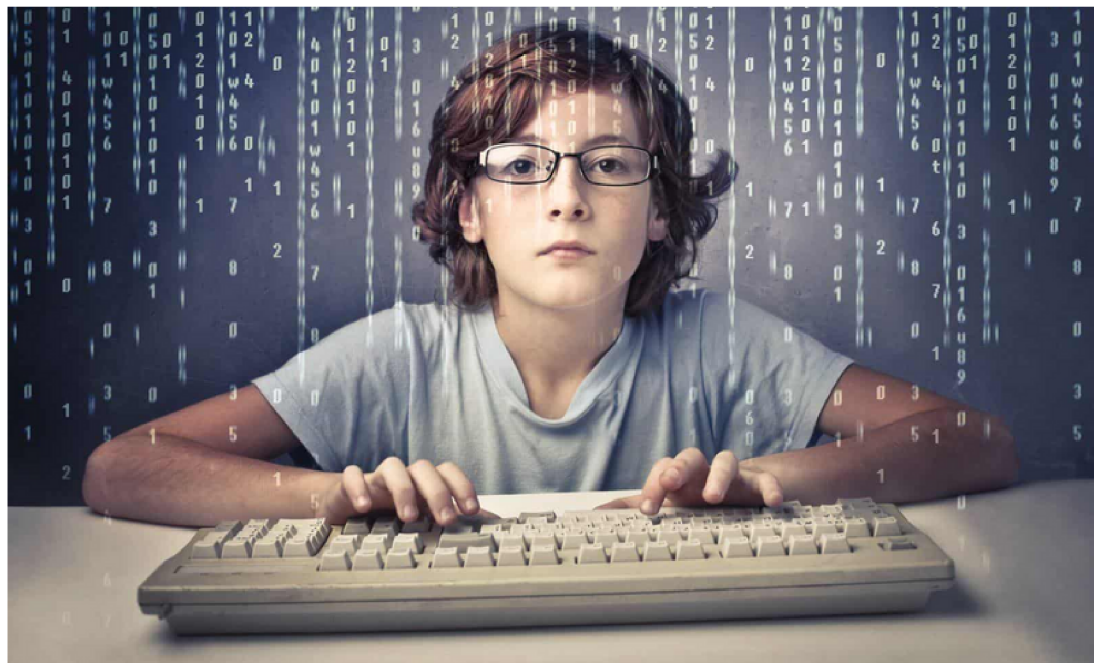


PEMBINA TRAILS COLLEGIATE

50 Frontier Trail, Winnipeg, Manitoba

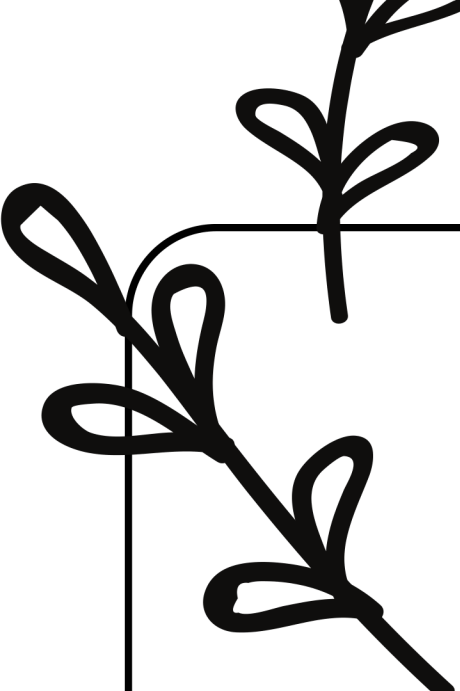


WHAT DOES BEING A PTEC STUDENT MEAN



**MANITOBA INSTITUTE OF
TRADES & TECHNOLOGY**





Grade 9 Teachers

Scott Hardman
Ashley Hoitnik

Students will be enrolled in the following:

- **Interdisciplinary:** Science, Social Studies, English
- Math & Phys. Ed.
- **PTEC Full Stack Developer (FSD):** Semester One
- **PTEC Cloud and Network Technician (CNT):** Semester Two



Grade 9 Student Services

Lana Francis

Connections:

- Guidance
- Mentorship
- Credit, Courses & Timetables
- MITT



industry professionals

Looking to engage with the next generation of Manitoba's tech professionals? Tech Manitoba offers a variety of ways to share your talents and experiences with enthusiastic students looking to plan their career path.



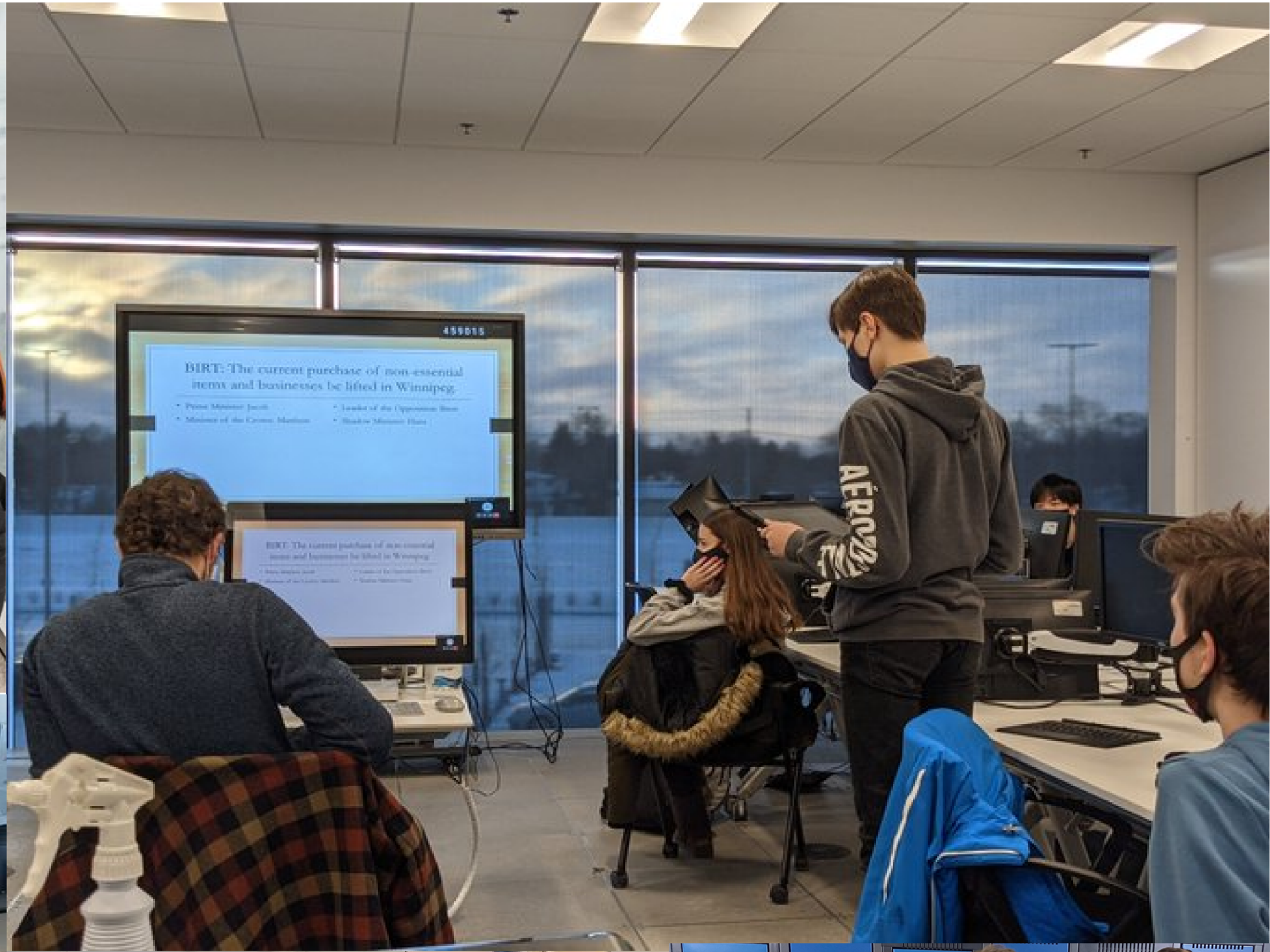
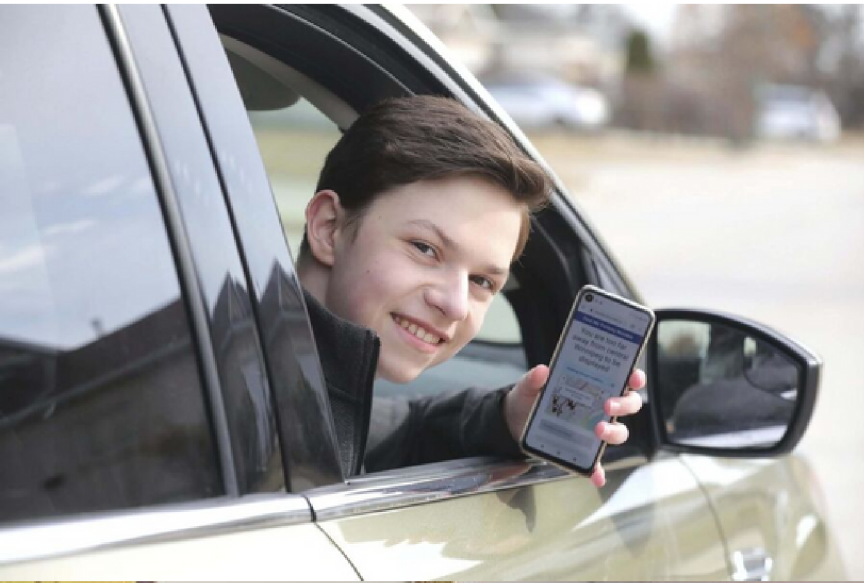
tech manitoba x pembina trails early college

Shape the future of Manitoba's tech industry. Tech Manitoba works closely with [Pembina Trails Early College \(PTEC\)](#) and [Manitoba Institute of Trades and Technology \(MITT\)](#), helping to facilitate industry-focused mentorship opportunities for this tech-centric accelerated high school, early college program.

PTEC combines the flexibility of high school, the rigor of post-secondary and the support and knowledge of the tech industry to create a comprehensive and authentic experience. **Students enrolled in the four-year PTEC program leave with a high school diploma; a post-secondary certificate and a head start in an exciting career.**

[Get Involved](#)

Marie Hacault - Youth Program Manager



DAILY STEM

Yes! Yes! Yes!

TOOLS AND TECHNOLOGY CHANGE. JOBS CHANGE. CULTURE CHANGES. BUT KIDS WHO HAVE THE ABILITY TO THINK CREATIVELY AND PROBLEM SOLVE WILL BE READY FOR ANYTHING IN THE FUTURE.!!!

... home from work we were going to count that touch a thing. And s

... need the opportunity to be creative. Sometimes what tools or supplies are available ... Another twist on

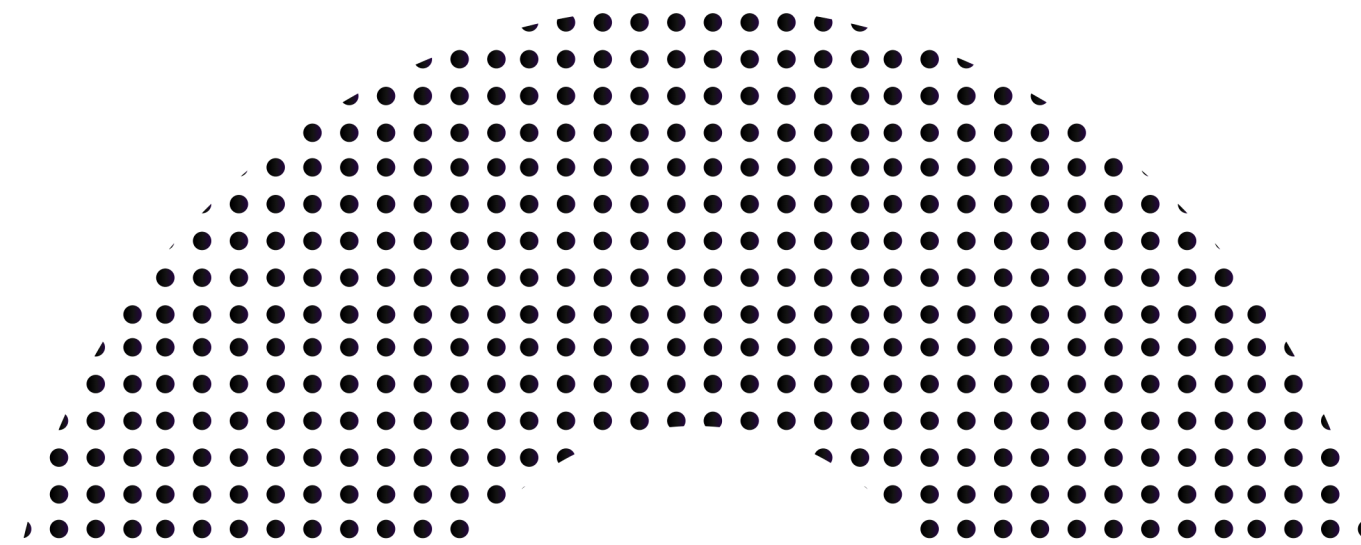
Schedule

Grade 9s

Attend PTC all day

Grade 10s

Attend PTC all day



	9	10	11	12
AM	PTC	PTC	PTC	MITT
PM	PTC	PTC	MITT	PTC



Timetables will be GIVEN OUT on

- Wednesday, June 21
- Thursday, June 22 at SmartPark with Lana Francis

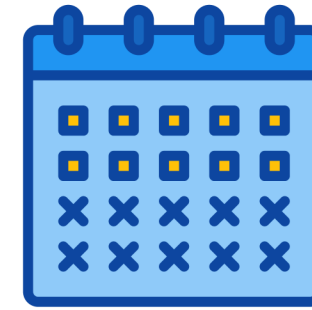
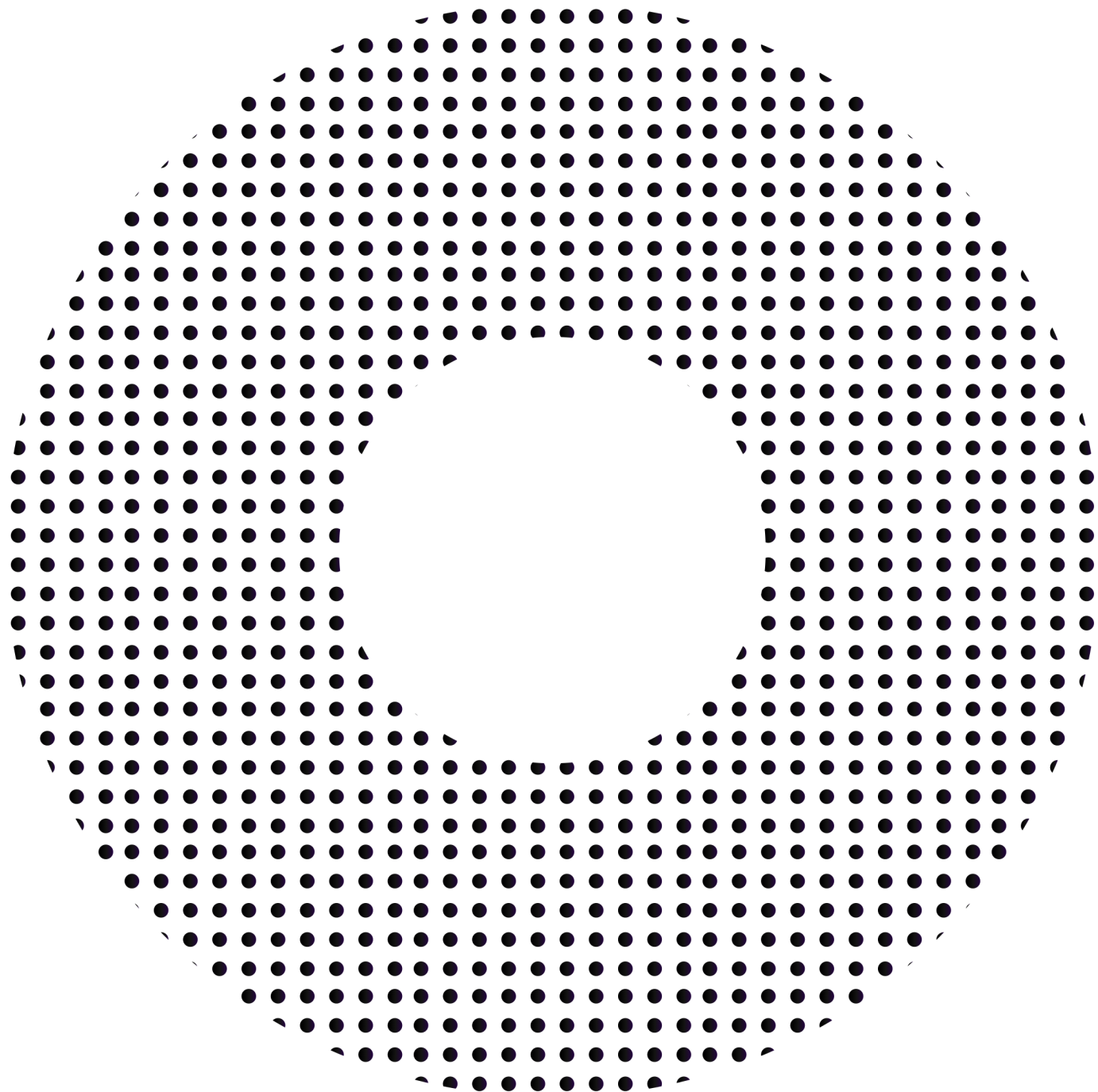
Timetables CHANGES will be on

- Monday, June 26
- Wednesday, June 28 at SmartPark with Lana Francis

TimeTables

Course requests are requests

Attendance 100%



No more than three absences

Sometimes students need to be away from school and we understand that.

Our data has shown that students who are away from PTEC for more than two days in a row suffer academically due to the hands-on activities and the accelerated pace.

Family Vacations

Any type of vacation must be discussed with the school. Missing a significant amount of time learning in an accelerated environment does not support student success. There are limitations on how long a child can be away from school and continue at PTEC.



Sign in to
Pembina Trails

Edsby

All of our staff are continuously sharing with family members their assignments, tests, and project due dates. With the technology that we have, surprising marks or missing assignments no longer exist

EXPECTATIONS & FAIR NOTICE

- Students in PTEC uphold a standard and have a reputation of excellence and professionalism which has taken years to establish. Behaviour that compromises this standard will be taken seriously.
- After each grade completion, there will be a meeting with teachers, admin, student services and the student to discuss the year's stretches and strengths. Any issues that might come up will be addressed. Being at PTEC does not mean that you are there for four years if academically or behaviorally you are not reaching the expectation.
- It is an expectation that students comply with our Technology Acceptable Use Policy.
- PTEC students need to abide by all of the expectations during their class time in PTEC and their other classes at PTC

Transportation



- A student who attends PTEC at PTC and resides in the OP or SH area has access to a divisional bus which will run from OP and SH to PTC in the AM and then the same route back to those areas after school
- Students outside of those areas should find their own transportation to and from school

Technology

Our students have access to a device that will serve them up until the end of their Grade 10 year.

Starting in grade 11, they will have to purchase their own device to take to MITT.

Students should have a Windows-based OS device at home so that they can work on their studies outside of school time.



Extra Curricular



Cyber Patriot

Scott Hardman



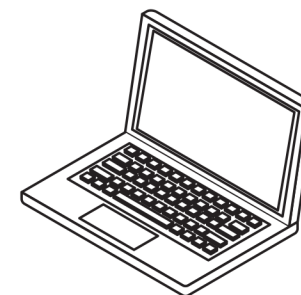
Games Club

Chess, Mario Cart



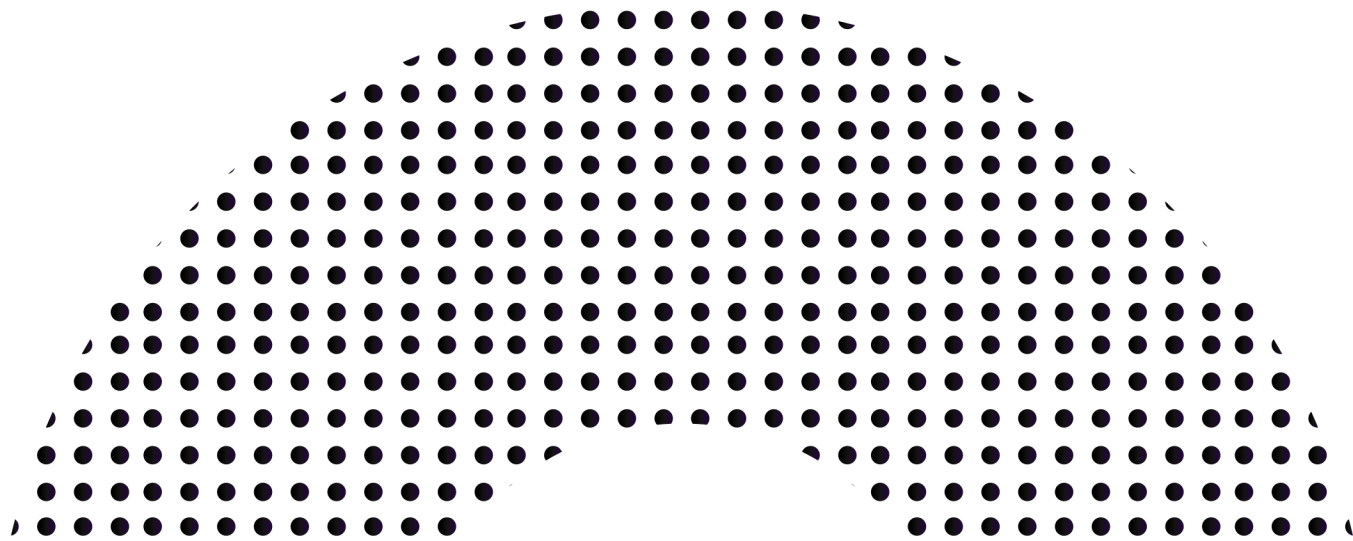
Dungeons & Dragons

Electronic or in-person



eSports

LoL and Rocket League



Extra Curricular



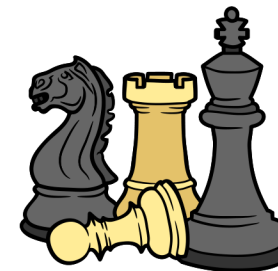
SPORTS TEAMS

Team and individual sports



COMMUNITY TEAMS

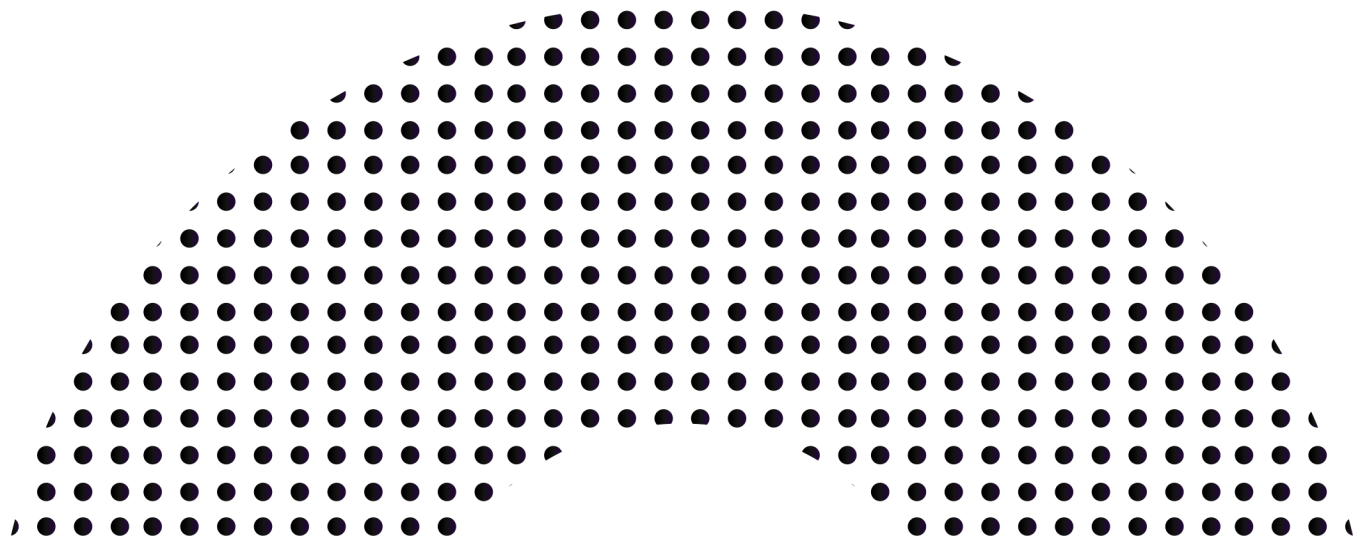
Youth in Philanthropy



CLUBS

Chess, beading, GSA

Students that wish to come early or stay late must find alternative transportation to and from if divisional transportation doesn't work.



Post-Secondary

Grade 11

Students will attend Pembina Trails Collegiate in the morning and MITT in the afternoon for their first year of College in either (FSD) Full Stack Developer or (CNT) Cloud & Network Technician

Grade 12

Students will attend MITT in the morning and Pembina Trails Collegiate in the afternoon. They will graduate with not only a high school diploma but also post-secondary certification in the stream of their choice



Our Students



Dear Families

I urge you to go home and discuss everything that was said here today and remember:

- Your child sits in that seat.
- Your child has to learn.
- Your child is rerouting their life.
- A commitment is essential for success.
- Someone's is waiting for the call.



4 year journey

Questions?

- School starts at 8:30 am and ends at 3:30 pm
- We can not list the courses they will be taking yet. Ashley and Scott are preparing for the new space and continuing to meet with MITT
- Families should not plan for a vacation that would be longer than 3-4 days outside of the school programming. We will not approve that type of travel due to the nature of the programming without thoughtful and well-in-advance notice. Your other courses are important as well.
- IT and Science fairs will be communicated through PTEC and PTC
- If you do not live within the PT divisional boundaries, you will not have access to divisional transportation
- If you decide to leave PTEC, you will finish out your year at PTC and then will have to move back to your catchment school or SOC
- There are many options for sports at PTC. Transportation is not offered

Questions?

- PTEC has something called Dual Credits.
- There will be no internship attached to PTEC/MITT after grade 12 unless you have decided to enter into the work and industry path.
- 12--industry, 12--post-secondary, 12--MITT

Contact us before June 30, 2023

For inquiries and connecting

Email Address

Phone Number

ptec@pembinatrails.ca

(204) 560 1999



